

Courtesy Of Paige Gibson Of MaxWell Polaris

## \$428,900 - 1671 Chapman Way, Edmonton

MLS® #E4461816

**\$428,900**

3 Bedroom, 2.50 Bathroom, 1,692 sqft  
Single Family on 0.00 Acres

Chappelle Area, Edmonton, AB

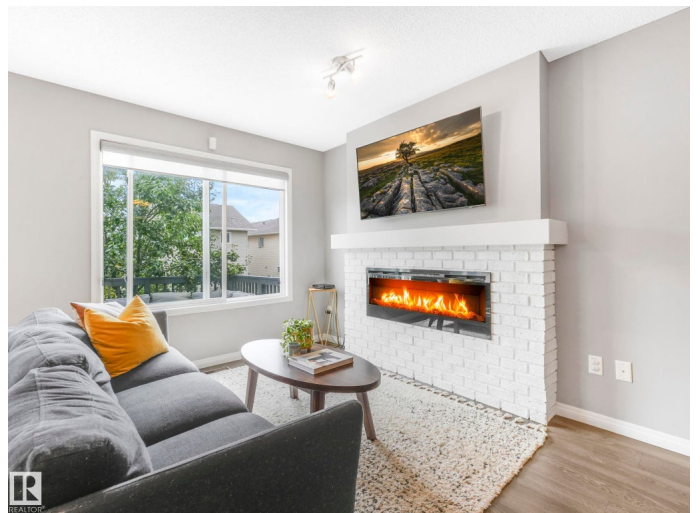
Welcome to Chappelle Gardens, one of Edmonton's most sought-after communities offering scenic parks, ponds, skating rinks, walking trails, & an active residents' association that has plenty of activities for kids and adults! This luxury upgraded half-duplex features an open-concept floor plan perfect for entertaining, w/ a stunning kitchen that includes ceiling-height cabinets, white quartz countertops, a huge island, s.s. appliances, a large corner pantry, & spacious dining & living areas. Enjoy the cozy fireplace and large windows overlooking a massive deck & mature apple tree for shade & privacy. The primary suite is on its own level, w/ huge windows, a walk-in closet w/custom organization, & 3 pce ensuite. Upstairs also offers a bonus room, laundry, a 4 pce bath, & 2 more beds—one with its own walk-in closet. The basement has large windows & tall ceilings. Complete with a single attached garage and Hunter Douglas blinds, this spacious home has so much to offer a couple or growing family.

Built in 2012

### Essential Information

MLS® # E4461816

Price \$428,900



Bedrooms	3
Bathrooms	2.50
Full Baths	2
Half Baths	1
Square Footage	1,692
Acres	0.00
Year Built	2012
Type	Single Family
Sub-Type	Half Duplex
Style	2 Storey
Status	Active

### **Community Information**

Address	1671 Chapman Way
Area	Edmonton
Subdivision	Chappelle Area
City	Edmonton
County	ALBERTA
Province	AB
Postal Code	T6W 0Y5

### **Amenities**

Amenities	Deck, Hot Water Electric, No Smoking Home, Smart/Program. Thermostat, Vinyl Windows, Natural Gas BBQ Hookup
Parking Spaces	2
Parking	Single Garage Attached

### **Interior**

Interior Features	ensuite bathroom
Appliances	Dishwasher-Built-In, Dryer, Garage Control, Garage Opener, Microwave Hood Fan, Refrigerator, Stove-Electric, Washer, Window Coverings
Heating	Forced Air-1, Natural Gas
Fireplace	Yes
Fireplaces	Mantel
Stories	2
Has Basement	Yes
Basement	Full, Unfinished

### **Exterior**

Exterior	Wood, Brick, Vinyl
Exterior Features	Fenced, Flat Site, Golf Nearby, Playground Nearby, Public Transportation, Shopping Nearby
Roof	Asphalt Shingles
Construction	Wood, Brick, Vinyl
Foundation	Concrete Perimeter

### **School Information**

Elementary	Donald R. Getty School
Middle	Donald R. Getty School
High	Dr. Anne Anderson School

### **Additional Information**

Date Listed	October 11th, 2025
Days on Market	5
Zoning	Zone 55
HOA Fees	426
HOA Fees Freq.	Annually

DATA IS DEEMED RELIABLE BUT IS NOT GUARANTEED ACCURATE BY THE REALTORS® ASSOCIATION OF EDMONTON. COPYRIGHT 2025 BY THE REALTORS® ASSOCIATION OF EDMONTON. ALL RIGHTS RESERVED. Trademarks are owned or controlled by the Canadian Real Estate Association (CREA) and identify real estate professionals who are members of CREA (REALTOR®, REALTORS®) and/or the quality of services they provide (MLS®, Multiple Listing Service®)

Listing information last updated on October 16th, 2025 at 1:17am MDT