

Courtesy Of Cheryl Linklater Of RE/MAX Elite

## \$224,900 - 115 70 Woodlands Road, St. Albert

MLS® #E4455032

**\$224,900**

3 Bedroom, 1.00 Bathroom, 1,042 sqft  
Condo / Townhouse on 0.00 Acres

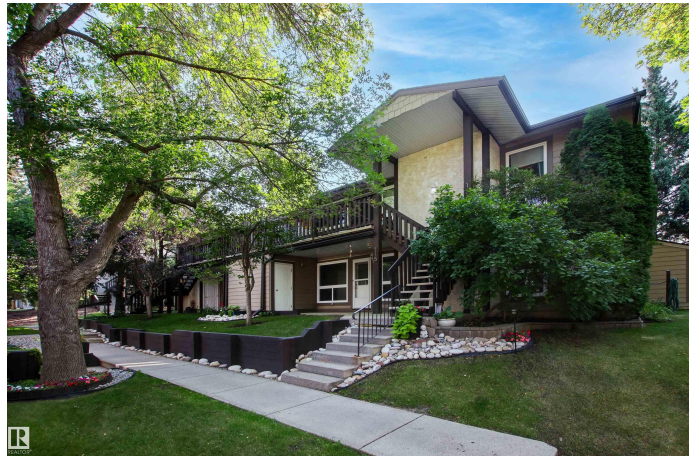
Woodlands (St. Albert), St. Albert, AB

Welcome to the sought after Wynford Hill complex. This corner unit in a quiet location is perfect for 1st time buyers or those wanting to downsize. A main floor bungalow with a large patio, this home features an open design with a spacious living/dining area, lots of natural light and a wood burning fireplace. The modern kitchen boasts updated white cabinetry with soft closing drawers, a new stove and a walk in pantry. There's lots of room for the family with 3 bedrooms (2 with walk in closets). As well, the primary bedroom is large enough for a king size suite and has access to the main bath. Enjoy the convenience of in-suite laundry and a brand new washer and dryer. Just off the patio is a large outdoor storage room and a separate utility room with new high end insulation and a newer HWT. There is an assigned parking stall and plenty of guest parking. Close to parks, trails, tennis courts, skating rink and walking distance to 4 schools/playgrounds. Don't miss out on this beautiful condo!

Built in 1982

### Essential Information

MLS® #	E4455032
Price	\$224,900
Bedrooms	3



Bathrooms	1.00
Full Baths	1
Square Footage	1,042
Acres	0.00
Year Built	1982
Type	Condo / Townhouse
Sub-Type	Carriage
Style	Bungalow
Status	Active

### **Community Information**

Address	115 70 Woodlands Road
Area	St. Albert
Subdivision	Woodlands (St. Albert)
City	St. Albert
County	ALBERTA
Province	AB
Postal Code	T8N 5H4

### **Amenities**

Amenities	See Remarks
Parking Spaces	1
Parking	Stall

### **Interior**

Appliances	Dishwasher-Built-In, Dryer, Fan-Ceiling, Hood Fan, Refrigerator, Stove-Electric, Washer, Window Coverings
Heating	Forced Air-1, Natural Gas
Fireplace	Yes
Fireplaces	Tile Surround
Stories	1
Has Basement	Yes
Basement	None, No Basement

### **Exterior**

Exterior	Wood, Stucco
Exterior Features	Fruit Trees/Shrubs, Golf Nearby, Landscaped, Playground Nearby, Public Transportation, Schools, Shopping Nearby
Roof	Asphalt Shingles

Construction	Wood, Stucco
Foundation	Concrete Perimeter

### **Additional Information**

Date Listed	August 28th, 2025
Days on Market	6
Zoning	Zone 24
Condo Fee	\$427

DATA IS DEEMED RELIABLE BUT IS NOT GUARANTEED ACCURATE BY THE REALTORS® ASSOCIATION OF EDMONTON. COPYRIGHT 2025 BY THE REALTORS® ASSOCIATION OF EDMONTON. ALL RIGHTS RESERVED. Trademarks are owned or controlled by the Canadian Real Estate Association (CREA) and identify real estate professionals who are members of CREA (REALTOR®, REALTORS®) and/or the quality of services they provide (MLS®, Multiple Listing Service®)

Listing information last updated on September 3rd, 2025 at 2:02pm MDT