

\$172,888 - 120 240 Spruce Ridge Road, Spruce Grove

MLS® #E4454746

\$172,888

2 Bedroom, 2.00 Bathroom, 848 sqft
Condo / Townhouse on 0.00 Acres

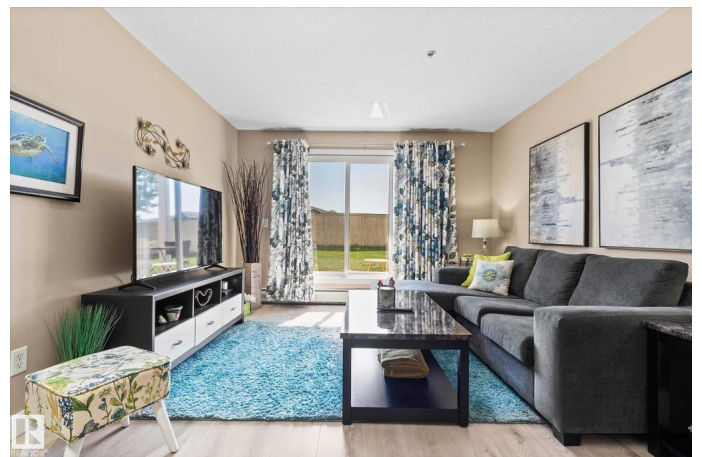
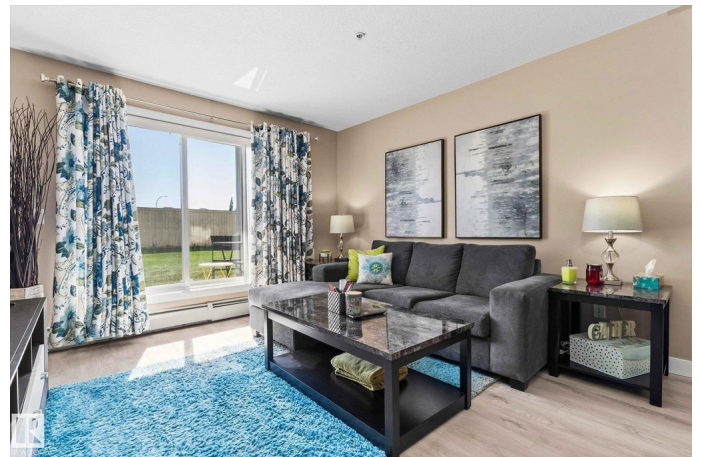
Spruce Ridge, Spruce Grove, AB

Welcome to Spruce Ridge Manor . This suite offers Plenty of natural light with greenspace off the patio. South facing main floor with 2 large bedrooms and 2 full bathrooms . ensuite with walk in closet and Many upgrades including, New laminate flooring installed in December. washer and dryer have been recently upgraded along with back splash, paint and counter tops ! this unit comes with 2 titled parking stalls conveniently located close to the door for easy access ! Close to all amenities, including schools, Tri-Leisure Center, parks and transit! Great for first time home buyers, investors or those looking to downsize , Don't miss out on this amazing suite! This building does not allow pets

Built in 2008

Essential Information

MLS® #	E4454746
Price	\$172,888
Bedrooms	2
Bathrooms	2.00
Full Baths	2
Square Footage	848
Acres	0.00
Year Built	2008
Type	Condo / Townhouse



Sub-Type	Lowrise Apartment
Style	Multi Level Apartment
Status	Active

Community Information

Address	120 240 Spruce Ridge Road
Area	Spruce Grove
Subdivision	Spruce Ridge
City	Spruce Grove
County	ALBERTA
Province	AB
Postal Code	T7X 0G5

Amenities

Amenities	Off Street Parking, Detectors Smoke, Intercom, No Smoking Home, Parking-Visitor, Patio, Secured Parking, Security Door, Sprinkler System-Fire, Sprinkler Sys-Underground, Storage-In-Suite
Parking Spaces	2
Parking	Heated, Insulated, Parkade, Stall, Underground, See Remarks

Interior

Interior Features	ensuite bathroom
Appliances	Dishwasher-Built-In, Garage Control, Garage Opener, Oven-Microwave, Refrigerator, Stacked Washer/Dryer, Stove-Electric, Window Coverings, See Remarks
Heating	Baseboard, Water
# of Stories	4
Stories	4
Has Basement	Yes
Basement	None, No Basement

Exterior

Exterior	Wood, Stucco
Exterior Features	Backs Onto Park/Trees, Golf Nearby, No Through Road, Playground Nearby, Public Swimming Pool, Public Transportation, Schools, Shopping Nearby, Partially Fenced
Roof	Asphalt Shingles
Construction	Wood, Stucco
Foundation	Concrete Perimeter

Additional Information

Date Listed	August 25th, 2025
Days on Market	9
Zoning	Zone 91
Condo Fee	\$457

DATA IS DEEMED RELIABLE BUT IS NOT GUARANTEED ACCURATE BY THE REALTORS® ASSOCIATION OF EDMONTON. COPYRIGHT 2025 BY THE REALTORS® ASSOCIATION OF EDMONTON. ALL RIGHTS RESERVED. Trademarks are owned or controlled by the Canadian Real Estate Association (CREA) and identify real estate professionals who are members of CREA (REALTOR®, REALTORS®) and/or the quality of services they provide (MLS®, Multiple Listing Service®)

Listing information last updated on September 3rd, 2025 at 2:02pm MDT