

\$434,900 - 12107 123 Street, Edmonton

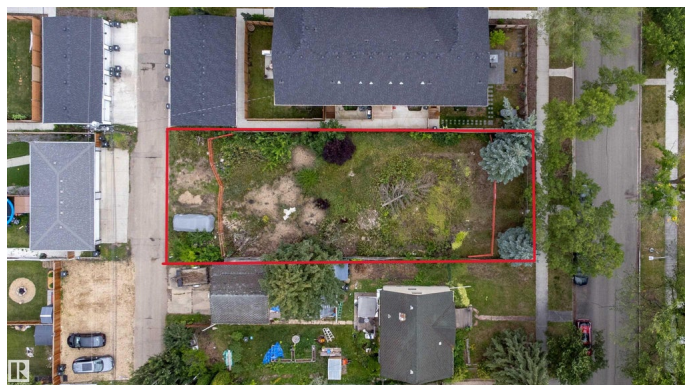
MLS® #E4454360

\$434,900

0 Bedroom, 0.00 Bathroom,
Single Family on 0.00 Acres

Prince Charles, Edmonton, AB

Shovel-ready and fully approved, this 50' x 141' lot in Prince Charles offers a rare turnkey infill opportunity. The sale includes vacant land, full development and building permits, servicing, and complete architectural plans for an 8-unit build (triplex + 2 garage suites). Grandfathered under Edmonton's former RS zoning, this project benefits from greater flexibility than what's allowed today—no demolition, red tape, or permitting delays. Located on a quiet street near 124 St, downtown, and transit, the lot also sits just west of the upcoming Blatchford community: a major urban hub-in-progress with its own LRT stop, central park, school, and future market district. Whether you're building to hold or sell, this listing eliminates the friction and lets you move straight into construction with valuable time, cost, and approval advantages already in place.



Essential Information

MLS® #	E4454360
Price	\$434,900
Bathrooms	0.00
Acres	0.00
Type	Single Family
Sub-Type	Vacant Lot/Land
Status	Active

Community Information

Address	12107 123 Street
Area	Edmonton
Subdivision	Prince Charles
City	Edmonton
County	ALBERTA
Province	AB
Postal Code	T5L 0H4

Exterior

Exterior Features Back Lane, Paved Lane, Playground Nearby, Public Swimming Pool, Public Transportation, Schools, Shopping Nearby

Additional Information

Date Listed	August 22nd, 2025
Days on Market	63
Zoning	Zone 04

DATA IS DEEMED RELIABLE BUT IS NOT GUARANTEED ACCURATE BY THE REALTORS® ASSOCIATION OF EDMONTON. COPYRIGHT 2025 BY THE REALTORS® ASSOCIATION OF EDMONTON. ALL RIGHTS RESERVED. Trademarks are owned or controlled by the Canadian Real Estate Association (CREA) and identify real estate professionals who are members of CREA (REALTOR®, REALTORS®) and/or the quality of services they provide (MLS®, Multiple Listing Service®)

Listing information last updated on October 24th, 2025 at 1:17pm MDT