

\$345,000 - 3 2021 Grantham Court, Edmonton

MLS® #E4448771

\$345,000

2 Bedroom, 2.50 Bathroom, 1,229 sqft

Condo / Townhouse on 0.00 Acres

Glastonbury, Edmonton, AB

MOVE IN READY and waiting for you!

Welcome to Summerhill Lane this 1229 sq. ft. half duplex condo in desirable Glastonbury.

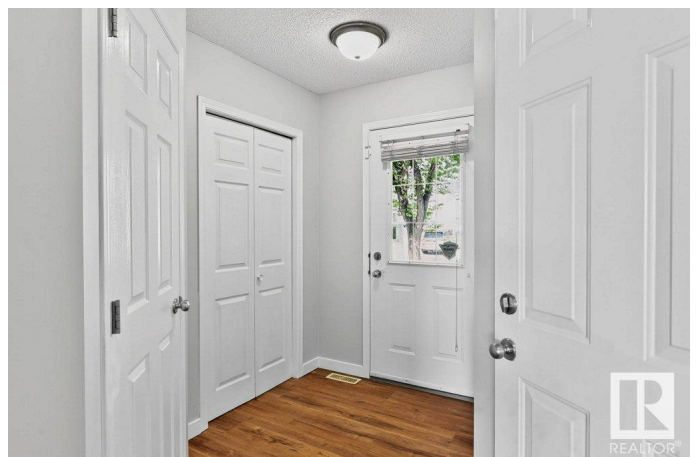
This 2 bedroom, 2.5 bath home boasts brand new flooring throughout the main and upper levels, fresh modern paint, and a picture-perfect backyard oasis that opens directly onto peaceful GREENSPACE and a tranquil pond—a rare and serene setting that offers both privacy and a nature-lover's dream! The main floor features a bright, open-concept layout, spacious living room, cozy dining area, and kitchen flooded with natural southern light. A convenient half bath and access to your fenced, private yard retreat complete the main level. Upstairs, you'll find a generous primary bedroom with 3pc ensuite, 2nd bedroom, and full 4pc bath. The FF basement adds a large rec room—perfect for movie nights or a home gym—and includes laundry and utility space. All this plus low condo fees, a prime location close to schools, parks, playgrounds, trails, transit, and access to Whitemud & A Henday DR.

Built in 2002

Essential Information

MLS® # E4448771

Price \$345,000



Bedrooms	2
Bathrooms	2.50
Full Baths	2
Half Baths	1
Square Footage	1,229
Acres	0.00
Year Built	2002
Type	Condo / Townhouse
Sub-Type	Half Duplex
Style	2 Storey
Status	Active

Community Information

Address	3 2021 Grantham Court
Area	Edmonton
Subdivision	Glastonbury
City	Edmonton
County	ALBERTA
Province	AB
Postal Code	T5T 6V7

Amenities

Amenities	Deck, No Smoking Home, Vinyl Windows
Parking	Single Garage Attached
Is Waterfront	Yes

Interior

Interior Features	ensuite bathroom
Appliances	Dishwasher-Built-In, Dryer, Garage Control, Garage Opener, Hood Fan, Oven-Microwave, Refrigerator, Stove-Electric, Washer, Window Coverings
Heating	Forced Air-1, Natural Gas
Stories	3
Has Basement	Yes
Basement	Full, Finished

Exterior

Exterior	Wood, Stone, Vinyl
Exterior Features	Fenced, Landscaped, No Back Lane, Picnic Area, Playground Nearby,

Public Transportation, Schools, Shopping Nearby, Stream/Pond

Roof	Asphalt Shingles
Construction	Wood, Stone, Vinyl
Foundation	Concrete Perimeter

School Information

Elementary	Kim Hung/Sister A.Brockman
Middle	Kim Hung/Sister A.Brockman
High	Jasper Place/St. O. Romero

Additional Information

Date Listed	July 19th, 2025
Days on Market	12
Zoning	Zone 58
Condo Fee	\$262

DATA IS DEEMED RELIABLE BUT IS NOT GUARANTEED ACCURATE BY THE REALTORS® ASSOCIATION OF EDMONTON. COPYRIGHT 2025 BY THE REALTORS® ASSOCIATION OF EDMONTON. ALL RIGHTS RESERVED.Trademarks are owned or controlled by the Canadian Real Estate Association (CREA) and identify real estate professionals who are members of CREA (REALTOR®, REALTORS®) and/or the quality of services they provide (MLS®, Multiple Listing Service®)

Listing information last updated on July 31st, 2025 at 2:47am MDT