

## \$699,900 - 7 Chelsea Way, Sherwood Park

MLS® #E4448593

**\$699,900**

3 Bedroom, 2.00 Bathroom, 1,606 sqft  
Single Family on 0.00 Acres

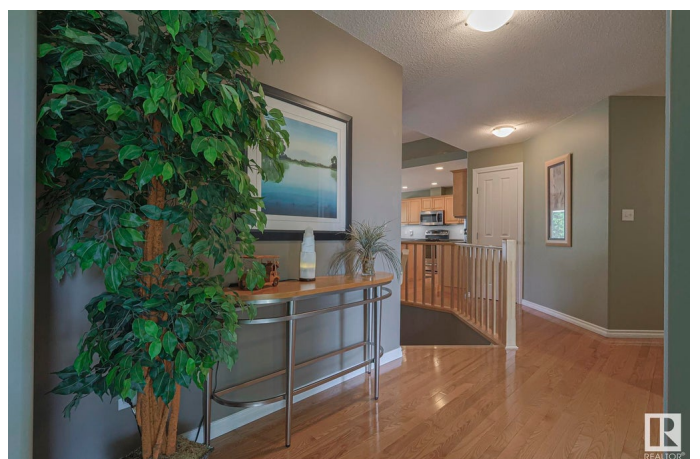
Lakeland Ridge, Sherwood Park, AB

Original owner, pride of ownership is evident in this elegant & upgraded bungalow. 1605 sqft/149.18 m<sup>2</sup>, energy efficient, ICF construction (insulated concrete form). Main floor features include a great room with a two-sided gas fireplace (separating the living room & primary bedroom) adjacent to an island kitchen with an eating bar, sunny dining room, upgraded Corian countertops & maple cabinetry. Flex room can be used as bedroom #3, den, formal dining, library or family room. Primary bedroom features a fireplace, 4 piece ensuite & walk in closet. Bedroom #2 is conveniently located across the hall from the main bathroom. Main floor laundry/mud room with sink. Oak hardwood flooring throughout, luxury vinyl tile in bathrooms, flex room & bedrooms. In floor heating in basement & 22'x22' garage. West facing back yard, maintenance free deck with gazebo, immaculately landscaped, underground sprinkling, fully fenced. Painstakingly maintained, newer shingles, upgraded high e furnace, central a/c, move in ready.

Built in 2001

### Essential Information

|        |           |
|--------|-----------|
| MLS® # | E4448593  |
| Price  | \$699,900 |



|                |                        |
|----------------|------------------------|
| Bedrooms       | 3                      |
| Bathrooms      | 2.00                   |
| Full Baths     | 2                      |
| Square Footage | 1,606                  |
| Acres          | 0.00                   |
| Year Built     | 2001                   |
| Type           | Single Family          |
| Sub-Type       | Detached Single Family |
| Style          | Bungalow               |
| Status         | Active                 |

### **Community Information**

|             |                |
|-------------|----------------|
| Address     | 7 Chelsea Way  |
| Area        | Sherwood Park  |
| Subdivision | Lakeland Ridge |
| City        | Sherwood Park  |
| County      | ALBERTA        |
| Province    | AB             |
| Postal Code | T8H 2G6        |

### **Amenities**

|                |   |
|----------------|---|
| Amenities      | Air Conditioner, Deck, 9 ft. Basement Ceiling |
| Parking Spaces | 4   |
| Parking        | Double Garage Attached, Heated, Insulated     |

### **Interior**

|                   |   |
|-------------------|---|
| Interior Features | ensuite bathroom  |
| Appliances        | Air Conditioning-Central, Dishwasher-Built-In, Dryer, Garage Control, Garage Opener, Microwave Hood Fan, Refrigerator, Stove-Electric, Washer, Window Coverings |
| Heating           | Forced Air-1, Heat Pump, Natural Gas  |
| Fireplace         | Yes   |
| Fireplaces        | Double Sided  |
| Stories           | 1   |
| Has Basement      | Yes   |
| Basement          | Full, Unfinished  |

### **Exterior**

|          |   |
|----------|---|
| Exterior | ICFs (Insulated Concrete Forms), Brick, Vinyl |
|----------|---|

|                   |   |
|-------------------|---|
| Exterior Features | Fenced, Flat Site, Landscaped, No Back Lane, Playground Nearby, Public Swimming Pool, Public Transportation, Schools, Shopping Nearby |
| Roof              | Asphalt Shingles  |
| Construction      | ICFs (Insulated Concrete Forms), Brick, Vinyl   |
| Foundation        | Concrete Perimeter  |

**School Information**

|            |                         |
|------------|-------------------------|
| Elementary | Lakeland Ridge/Trillium |
| Middle     | Lakeland Ridge/Trillium |
| High       | Bev Facey               |

**Additional Information**

|                |                 |
|----------------|-----------------|
| Date Listed    | July 18th, 2025 |
| Days on Market | 1               |
| Zoning         | Zone 25         |

DATA IS DEEMED RELIABLE BUT IS NOT GUARANTEED ACCURATE BY THE REALTORS® ASSOCIATION OF EDMONTON. COPYRIGHT 2025 BY THE REALTORS® ASSOCIATION OF EDMONTON. ALL RIGHTS RESERVED.Trademarks are owned or controlled by the Canadian Real Estate Association (CREA) and identify real estate professionals who are members of CREA (REALTOR®, REALTORS®) and/or the quality of services they provide (MLS®, Multiple Listing Service®)

Listing information last updated on July 19th, 2025 at 3:17am MDT