

\$419,900 - 103 51 Street, Edmonton

MLS® #E4447633

\$419,900

3 Bedroom, 3.50 Bathroom, 1,305 sqft

Single Family on 0.00 Acres

Charlesworth, Edmonton, AB

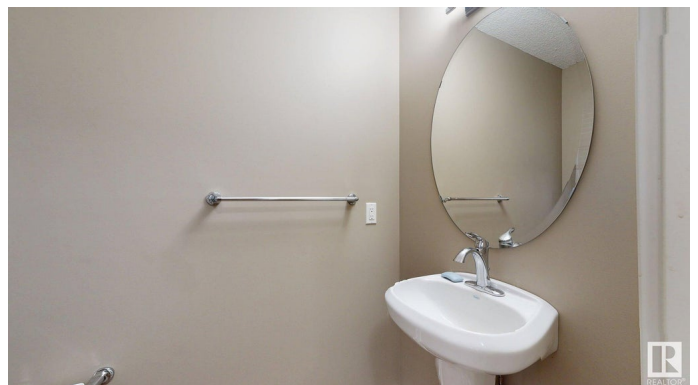
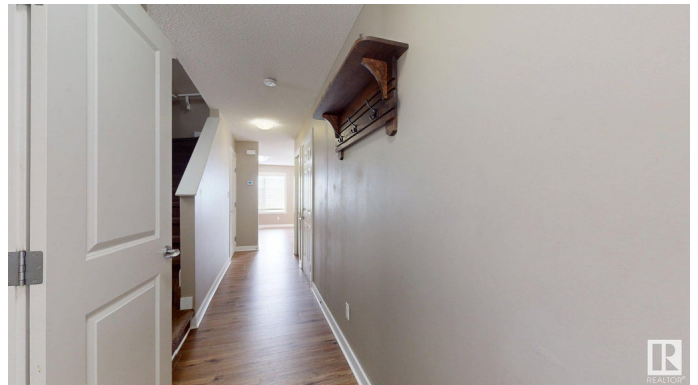
Welcome to this move-in-ready half duplex in the highly sought-after community of Charlesworth. Offering 3 spacious bedrooms, 3.5 bathrooms, and a fully finished basement, this home delivers space, comfort, and convenience for the whole family. The main floor features a bright and open layout with a functional kitchen, cozy living room, dining area & a convenient half bath. Upstairs, youâ€™ll find three well-sized bedrooms and two full bathrooms, including a primary suite with it's own private ensuite. The basement is fully finished, with extra living space complete with a full bathroomâ€”perfect for a rec room, home office. Flooring throughout the home includes mix of carpet, tile & brand new flooring on main with LVP. Step outside to enjoy the fully fenced backyard with a great-sized deckâ€”ideal for summer BBQs or relaxing evenings. Located on a quiet crescent just minutes from Ellerslie School, parks, a playground, & minutes to the shopping centre on Ellerslie Road & quick acces to Anthony Henday.

Built in 2012

Essential Information

MLS® # E4447633

Price \$419,900



Bedrooms	3
Bathrooms	3.50
Full Baths	3
Half Baths	1
Square Footage	1,305
Acres	0.00
Year Built	2012
Type	Single Family
Sub-Type	Half Duplex
Style	2 Storey
Status	Active

Community Information

Address	103 51 Street
Area	Edmonton
Subdivision	Charlesworth
City	Edmonton
County	ALBERTA
Province	AB
Postal Code	T6X 0Z7

Amenities

Amenities	Car Wash, Deck, See Remarks
Parking	Single Garage Attached

Interior

Interior Features	ensuite bathroom
Appliances	Dishwasher-Built-In, Dryer, Hood Fan, Refrigerator, Stove-Electric, Washer
Heating	Forced Air-1, Natural Gas
Stories	3
Has Basement	Yes
Basement	Full, Finished

Exterior

Exterior	Wood, Vinyl
Exterior Features	Fenced, Landscaped, Playground Nearby, Schools, Shopping Nearby
Roof	Asphalt Shingles
Construction	Wood, Vinyl

Foundation Concrete Perimeter

Additional Information

Date Listed July 14th, 2025

Zoning Zone 53

DATA IS DEEMED RELIABLE BUT IS NOT GUARANTEED ACCURATE BY THE REALTORS® ASSOCIATION OF EDMONTON. COPYRIGHT 2025 BY THE REALTORS® ASSOCIATION OF EDMONTON. ALL RIGHTS RESERVED.Trademarks are owned or controlled by the Canadian Real Estate Association (CREA) and identify real estate professionals who are members of CREA (REALTOR®, REALTORS®) and/or the quality of services they provide (MLS®, Multiple Listing Service®)
Listing information last updated on July 14th, 2025 at 8:47pm MDT