

## \$420,000 - 1131 35a Street, Edmonton

MLS® #E4446464

**\$420,000**

6 Bedroom, 2.00 Bathroom, 1,191 sqft

Single Family on 0.00 Acres

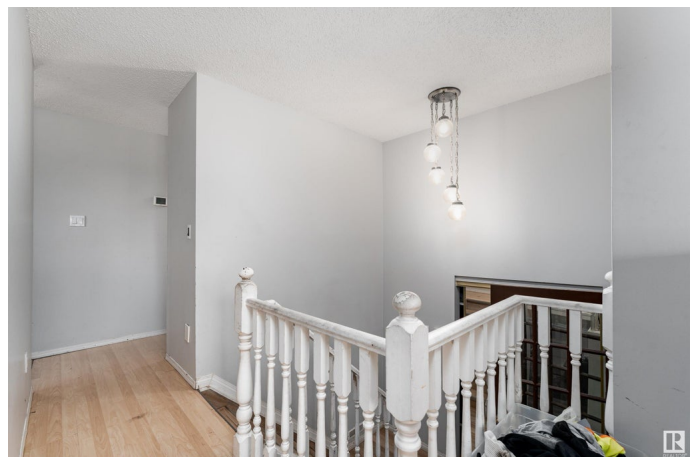
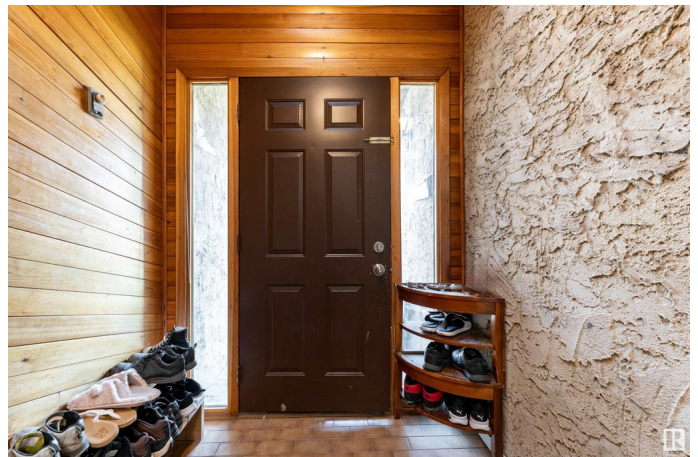
Crawford Plains, Edmonton, AB

Welcome to this spacious bi-level home in Crawford Plains, Edmonton! As you enter, you're greeted by a bright foyer leading to a large living room with a big window that fills the space with natural light. The kitchen has a warm, homey feel with plenty of counter space and cabinetry, along with a dedicated dining area. The upper level also features a primary bedroom, two additional bedrooms, and a 4-piece bathroom. The fully finished basement offers a generous rec room, three more bedrooms, a 4-piece bathroom, and a laundry area. Enjoy the outdoors with a deck and the convenience of a single attached garage.

Built in 1979

### Essential Information

|                |                        |
|----------------|------------------------|
| MLS® #         | E4446464               |
| Price          | \$420,000              |
| Bedrooms       | 6                      |
| Bathrooms      | 2.00                   |
| Full Baths     | 2                      |
| Square Footage | 1,191                  |
| Acres          | 0.00                   |
| Year Built     | 1979                   |
| Type           | Single Family          |
| Sub-Type       | Detached Single Family |
| Style          | Bi-Level               |



|        |        |
|--------|--------|
| Status | Active |
|--------|--------|

### Community Information

|             |                 |
|-------------|-----------------|
| Address     | 1131 35a Street |
| Area        | Edmonton        |
| Subdivision | Crawford Plains |
| City        | Edmonton        |
| County      | ALBERTA         |
| Province    | AB              |
| Postal Code | T6L 2L4         |

### Amenities

|           |                        |
|-----------|------------------------|
| Amenities | Detectors Smoke        |
| Parking   | Single Garage Attached |

### Interior

|              |  |
|--------------|--|
| Appliances   | Dryer, Humidifier-Power(Furnace), Refrigerator, Stove-Electric, Washer |
| Heating      | Forced Air-1, Natural Gas  |
| Stories      | 3  |
| Has Basement | Yes  |
| Basement     | Full, Finished   |

### Exterior

|                   |  |
|-------------------|--|
| Exterior          | Wood, Stucco   |
| Exterior Features | Fenced, Fruit Trees/Shrubs, Golf Nearby, Playground Nearby, Public Transportation, Schools |
| Roof              | Asphalt Shingles   |
| Construction      | Wood, Stucco   |
| Foundation        | Concrete Perimeter   |

### School Information

|            |                       |
|------------|-----------------------|
| Elementary | Crawford Plain School |
| Middle     | TD Baker School       |
| High       | W.P. Wagner School    |

### Additional Information

|                |                |
|----------------|----------------|
| Date Listed    | July 8th, 2025 |
| Days on Market | 6              |
| Zoning         | Zone 29        |

DATA IS DEEMED RELIABLE BUT IS NOT GUARANTEED ACCURATE BY THE REALTORS® ASSOCIATION OF EDMONTON. COPYRIGHT 2025 BY THE REALTORS® ASSOCIATION OF EDMONTON. ALL RIGHTS RESERVED.Trademarks are owned or controlled by the Canadian Real Estate Association (CREA) and identify real estate professionals who are members of CREA (REALTOR®, REALTORS®) and/or the quality of services they provide (MLS®, Multiple Listing Service®)

Listing information last updated on July 14th, 2025 at 5:02pm MDT