

Courtesy Of Jeff D Jackson Of Bode

\$733,301 - 1544 Grant Way, Edmonton

MLS® #E4446375

\$733,301

5 Bedroom, 4.00 Bathroom, 2,234 sqft

Single Family on 0.00 Acres

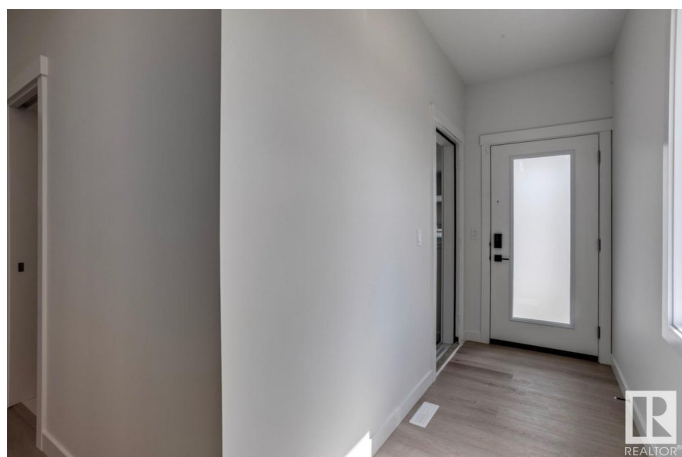
Glastonbury, Edmonton, AB

This stunning home boasts a beautiful Prairie Elevation and a separate side entrance leading to a spacious basement with 9' ceilings. The main floor features a fifth bedroom and a full bathroom, perfect for guests. Enjoy an elevated cooking experience with a standard spice kitchen and a generous dining nook ideal for family gatherings. The kitchen also includes a substantial island with a flush eating bar. The Great Room is enhanced by a 60' electric fireplace, creating a cozy ambiance. Upstairs, you'll find a convenient second-floor laundry, along with a luxurious 5-piece primary ensuite, complete with dual vanities, a freestanding soaker tub and separate glass shower. Bedroom #2 also has its own ensuite, ensuring comfort and privacy. This home is designed for both convenience and luxury, offering the perfect blend of style and function. Photos are representative.

Built in 2025

Essential Information

| | |
|------------|-----------|
| MLS® # | E4446375 |
| Price | \$733,301 |
| Bedrooms | 5 |
| Bathrooms | 4.00 |
| Full Baths | 4 |



| | |
|----------------|------------------------|
| Square Footage | 2,234 |
| Acres | 0.00 |
| Year Built | 2025 |
| Type | Single Family |
| Sub-Type | Detached Single Family |
| Style | 2 Storey |
| Status | Active |

Community Information

| | |
|-------------|----------------|
| Address | 1544 Grant Way |
| Area | Edmonton |
| Subdivision | Glastonbury |
| City | Edmonton |
| County | ALBERTA |
| Province | AB |
| Postal Code | T5T 0W2 |

Amenities

| | |
|----------------|--|
| Amenities | No Animal Home, No Smoking Home, See Remarks |
| Parking Spaces | 4 |
| Parking | Double Garage Attached |

Interior

| | |
|-------------------|---------------------------|
| Interior Features | ensuite bathroom |
| Appliances | Hood Fan, Oven-Microwave |
| Heating | Forced Air-1, Natural Gas |
| Fireplace | Yes |
| Fireplaces | Insert |
| Stories | 2 |
| Has Basement | Yes |
| Basement | Full, Unfinished |

Exterior

| | |
|-------------------|---|
| Exterior | Wood, Vinyl |
| Exterior Features | Corner Lot, Park/Reserve, Playground Nearby, Schools, Shopping Nearby |
| Roof | Asphalt Shingles |
| Construction | Wood, Vinyl |
| Foundation | Concrete Perimeter |

Additional Information

| | |
|----------------|----------------|
| Date Listed | July 7th, 2025 |
| Days on Market | 7 |
| Zoning | Zone 58 |
| HOA Fees | 126 |
| HOA Fees Freq. | Annually |

DATA IS DEEMED RELIABLE BUT IS NOT GUARANTEED ACCURATE BY THE REALTORS® ASSOCIATION OF EDMONTON. COPYRIGHT 2025 BY THE REALTORS® ASSOCIATION OF EDMONTON. ALL RIGHTS RESERVED.Trademarks are owned or controlled by the Canadian Real Estate Association (CREA) and identify real estate professionals who are members of CREA (REALTOR®, REALTORS®) and/or the quality of services they provide (MLS®, Multiple Listing Service®)

Listing information last updated on July 14th, 2025 at 9:17am MDT