

\$550,000 - 17 Emerald Terrace, St. Albert

MLS® #E4445729

\$550,000

4 Bedroom, 3.00 Bathroom, 1,335 sqft

Single Family on 0.00 Acres

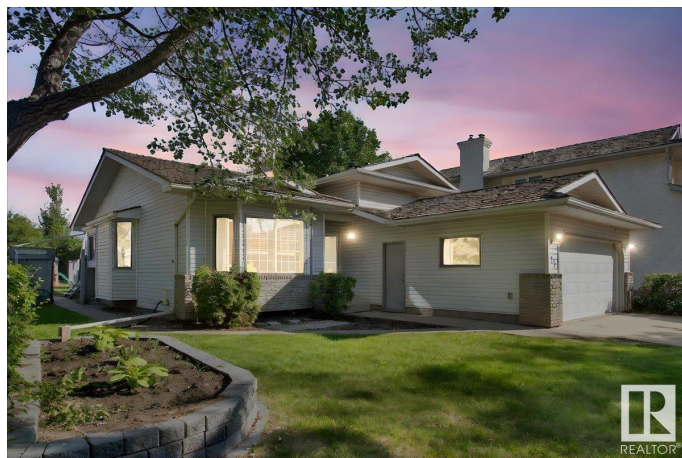
Erin Ridge, St. Albert, AB

Some buy houses for square footages - I'd buy this one for the backyard alone. Tucked away on a quiet cul de sac just steps from St Albert's beloved Candy Cane lane, this home offers the perfect mix of location, space, and charm. Erin Ridge park is less than half a block and a half away, making it ideal for families or peaceful evening strolls. Inside, you'll find an open-concept main floor with an updated kitchen, three bedrooms up stairs, and a fourth on the 3rd level. The updated bathroom and spacious storage room add convenience, while the double attached garage is a bonus. But the real show stopper? A massive, private, fully fenced backyard that's perfect for entertaining, gardening, or simply enjoying the outdoors.

Built in 1989

Essential Information

MLS® #	E4445729
Price	\$550,000
Bedrooms	4
Bathrooms	3.00
Full Baths	3
Square Footage	1,335
Acres	0.00
Year Built	1989
Type	Single Family



Sub-Type	Detached Single Family
Style	4 Level Split
Status	Active

Community Information

Address	17 Emerald Terrace
Area	St. Albert
Subdivision	Erin Ridge
City	St. Albert
County	ALBERTA
Province	AB
Postal Code	T8N 5S4

Amenities

Amenities	Hot Water Natural Gas, No Animal Home, No Smoking Home
Parking	Double Garage Attached

Interior

Interior Features	ensuite bathroom
Appliances	Dishwasher-Built-In, Dryer, Garage Control, Garage Opener, Microwave Hood Fan, Refrigerator, Stove-Electric, Washer
Heating	Forced Air-1, Natural Gas
Stories	4
Has Basement	Yes
Basement	Full, Finished

Exterior

Exterior	Wood, Vinyl
Exterior Features	Cul-De-Sac, Fenced, Landscaped, Playground Nearby, Schools, Shopping Nearby
Roof	Asphalt Shingles
Construction	Wood, Vinyl
Foundation	Concrete Perimeter

Additional Information

Date Listed	July 3rd, 2025
Days on Market	11
Zoning	Zone 24

DATA IS DEEMED RELIABLE BUT IS NOT GUARANTEED ACCURATE BY THE REALTORS® ASSOCIATION OF EDMONTON. COPYRIGHT 2025 BY THE REALTORS® ASSOCIATION OF EDMONTON. ALL RIGHTS

RESERVED.Trademarks are owned or controlled by the Canadian Real Estate Association (CREA) and identify real estate professionals who are members of CREA (REALTOR®, REALTORS®) and/or the quality of services they provide (MLS®, Multiple Listing Service®)

Listing information last updated on July 14th, 2025 at 1:32pm MDT