

\$499,900 - 1 Lawrence Crescent, St. Albert

MLS® #E4445321

\$499,900

5 Bedroom, 2.00 Bathroom, 1,233 sqft
Single Family on 0.00 Acres

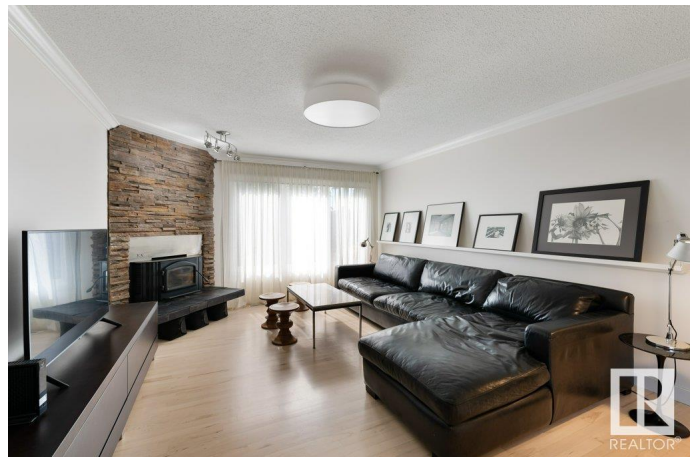
Lacombe Park, St. Albert, AB

Modern, clean and crisp! This 5 bedroom bungalow is updated and move in ready! Nestled on a quiet crescent close to schools, parks & walking trails. Maple hardwood floors extend throughout the main floor. The updated kitchen features white cabinetry, backsplash, concrete countertops, island, modern floating shelves & stainless steel appliances. The living room is spacious and features a cozy wood-burning fireplace and is open to the large dining space. There are three bedrooms on the main floor with a stunning 5pce updated bathroom featuring double sinks, concrete counters and tub surround. The spacious primary bedroom includes custom closet built-ins. The fully finished basement offers 2 additional bedrooms with newer legal egress windows, a 4-piece bath with Greek soaker tub, large rec room with painted concrete floors, and 2 newer hot water tanks. Enjoy the landscaped backyard and 22x24 heated garage. A perfect family home in a highly desirable neighbourhood!

Built in 1972

Essential Information

MLS® #	E4445321
Price	\$499,900
Bedrooms	5



Bathrooms	2.00
Full Baths	2
Square Footage	1,233
Acres	0.00
Year Built	1972
Type	Single Family
Sub-Type	Detached Single Family
Style	Bungalow
Status	Active

Community Information

Address	1 Lawrence Crescent
Area	St. Albert
Subdivision	Lacombe Park
City	St. Albert
County	ALBERTA
Province	AB
Postal Code	T8N 1S9

Amenities

Amenities	Patio, Vinyl Windows
Parking	Double Garage Detached

Interior

Appliances	Dishwasher-Built-In, Dryer, Garage Control, Garage Opener, Microwave Hood Fan, Refrigerator, Stove-Electric, Washer, Window Coverings
Heating	Forced Air-1, Natural Gas
Stories	2
Has Basement	Yes
Basement	Full, Finished

Exterior

Exterior	Wood, Metal, Stucco
Exterior Features	Fenced, Flat Site, Landscaped, Public Transportation, Schools, Shopping Nearby
Roof	Asphalt Shingles
Construction	Wood, Metal, Stucco
Foundation	Concrete Perimeter

Additional Information

Date Listed July 2nd, 2025

Days on Market 2

Zoning Zone 24

DATA IS DEEMED RELIABLE BUT IS NOT GUARANTEED ACCURATE BY THE REALTORS® ASSOCIATION OF EDMONTON. COPYRIGHT 2025 BY THE REALTORS® ASSOCIATION OF EDMONTON. ALL RIGHTS RESERVED. Trademarks are owned or controlled by the Canadian Real Estate Association (CREA) and identify real estate professionals who are members of CREA (REALTOR®, REALTORS®) and/or the quality of services they provide (MLS®, Multiple Listing Service®)

Listing information last updated on July 4th, 2025 at 11:02am MDT