

\$460,000 - 184 Robinson Drive, Leduc

MLS® #E4444820

\$460,000

3 Bedroom, 2.50 Bathroom, 1,641 sqft

Single Family on 0.00 Acres

Robinson, Leduc, AB

Located in family-friendly Robinson, this 3 bed, 2.5 bath two-storey home is full of thoughtful features and just steps from the park and outdoor rink! Enjoy 9ft ceilings, large windows, and an open-concept main floor with a spacious kitchen featuring a large island and plenty of cabinet space. Laundry is conveniently located off the kitchen. The front entry includes a generous foyer and coat closet, while the rear mudroom offers backyard access and a 2pc powder room. Upstairs, the large primary suite includes a private balcony with views of the nearby pond, a walk-in closet, and a 3pc ensuite. Two additional bedrooms are a great size and share a 4pc main bath. The basement is unfinished and ready for future development. Outside you'll find a double detached garage and a great yard space. Located close to trails, schools, playgrounds, and more—this home offers comfort, convenience, and community. Don't miss your chance to live in one of Leduc's most popular neighbourhoods!

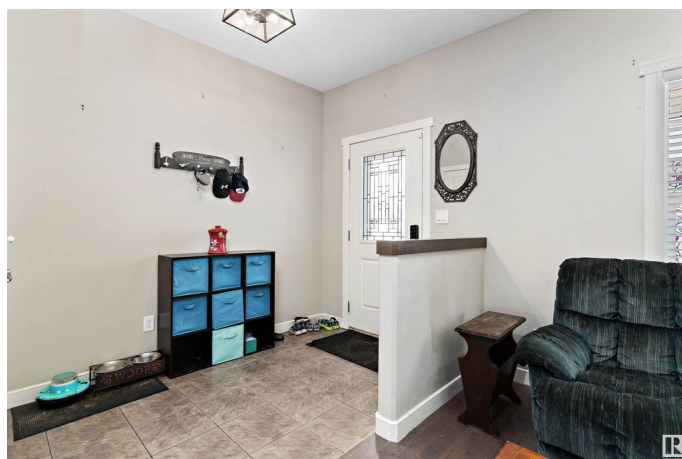
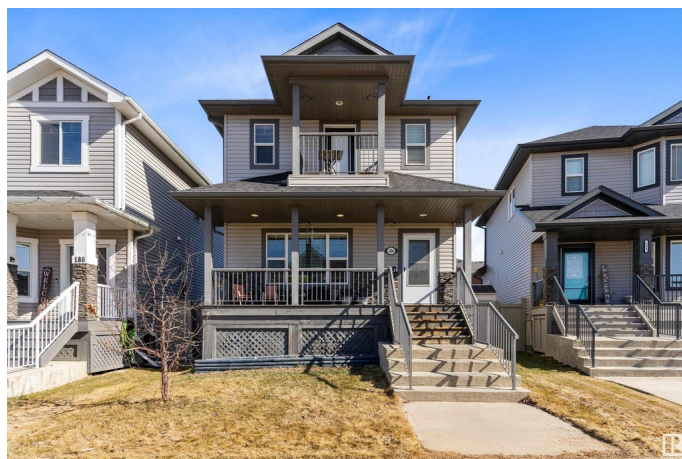
Built in 2015

Essential Information

MLS® # E4444820

Price \$460,000

Bedrooms 3



Bathrooms	2.50
Full Baths	2
Half Baths	1
Square Footage	1,641
Acres	0.00
Year Built	2015
Type	Single Family
Sub-Type	Detached Single Family
Style	2 Storey
Status	Active

Community Information

Address	184 Robinson Drive
Area	Leduc
Subdivision	Robinson
City	Leduc
County	ALBERTA
Province	AB
Postal Code	T9E 1B1

Amenities

Amenities	Off Street Parking, Air Conditioner, Ceiling 9 ft., Deck, Parking-Extra, See Remarks
Parking	Double Garage Detached

Interior

Interior Features	ensuite bathroom
Appliances	Air Conditioning-Central, Dishwasher-Built-In, Dryer, Garage Opener, Hood Fan, Refrigerator, Storage Shed, Stove-Electric, Washer, Window Coverings, TV Wall Mount
Heating	Forced Air-1, Natural Gas
Fireplace	Yes
Fireplaces	Mantel
Stories	2
Has Basement	Yes
Basement	Full, Unfinished

Exterior

Exterior	Wood, Vinyl
----------	-------------

Exterior Features	Airport Nearby, Fenced, Golf Nearby, Picnic Area, Playground Nearby, Schools, See Remarks
Roof	Asphalt Shingles
Construction	Wood, Vinyl
Foundation	Concrete Perimeter

Additional Information

Date Listed	June 27th, 2025
Days on Market	9
Zoning	Zone 81

DATA IS DEEMED RELIABLE BUT IS NOT GUARANTEED ACCURATE BY THE REALTORS® ASSOCIATION OF EDMONTON. COPYRIGHT 2025 BY THE REALTORS® ASSOCIATION OF EDMONTON. ALL RIGHTS RESERVED.Trademarks are owned or controlled by the Canadian Real Estate Association (CREA) and identify real estate professionals who are members of CREA (REALTOR®, REALTORS®) and/or the quality of services they provide (MLS®, Multiple Listing Service®)

Listing information last updated on July 6th, 2025 at 3:32am MDT