

\$410,000 - 662 Blackstone Bv, Leduc

MLS® #E4444110

\$410,000

4 Bedroom, 3.50 Bathroom, 1,174 sqft

Single Family on 0.00 Acres

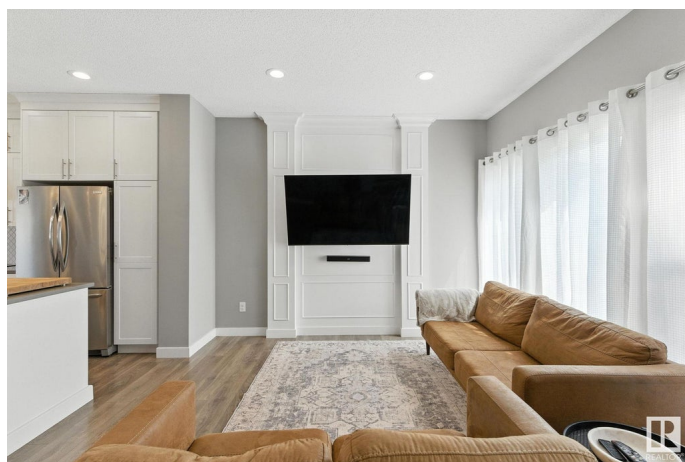
Black Stone, Leduc, AB

Stunning end-unit townhome with fully finished basement and double detached garage, perfectly positioned across from a park, playground, and winter skating rink! Step inside and experience luxury at every turn, starting with 9-foot ceilings and a bright, open-concept main floor. The chef-inspired kitchen boasts modern cream cabinetry, a quartz island with a custom table extension, and a spacious eat-in layout, ideal for entertaining. Upstairs, the elegant primary suite features a large walk-in closet and a spa-like ensuite with an oversized glass shower. Two additional bedrooms and a 4-piece bath complete the upper level. Downstairs, enjoy a fully renovated basement featuring a sleek bar, cozy living room, spacious bedroom, and a stylish 3-piece bathroom, ideal for guests or additional living space. This home offers modern style, unbeatable location, and true move-in-ready comfort.

Built in 2019

Essential Information

MLS® #	E4444110
Price	\$410,000
Bedrooms	4
Bathrooms	3.50



Full Baths	3
Half Baths	1
Square Footage	1,174
Acres	0.00
Year Built	2019
Type	Single Family
Sub-Type	Residential Attached
Style	2 Storey
Status	Active

Community Information

Address	662 Blackstone Bv
Area	Leduc
Subdivision	Black Stone
City	Leduc
County	ALBERTA
Province	AB
Postal Code	T9E 1H2

Amenities

Amenities	On Street Parking, Carbon Monoxide Detectors, Ceiling 9 ft., Detectors Smoke, Exterior Walls- 2"x6", Front Porch, Hot Wtr Tank-Energy Star, No Animal Home, No Smoking Home, Smart/Program. Thermostat, Vinyl Windows, HRV System
Parking	Double Garage Detached

Interior

Interior Features	ensuite bathroom
Appliances	Dishwasher-Built-In, Dryer, Garage Opener, Hood Fan, Refrigerator, Stove-Electric, Washer, Window Coverings
Heating	Forced Air-1, Natural Gas
Stories	3
Has Basement	Yes
Basement	Full, Finished

Exterior

Exterior	Wood, Stone, Vinyl
Exterior Features	Airport Nearby, Back Lane
Roof	Asphalt Shingles

Construction	Wood, Stone, Vinyl
Foundation	Concrete Perimeter

Additional Information

Date Listed	June 24th, 2025
Days on Market	12
Zoning	Zone 81

DATA IS DEEMED RELIABLE BUT IS NOT GUARANTEED ACCURATE BY THE REALTORS® ASSOCIATION OF EDMONTON. COPYRIGHT 2025 BY THE REALTORS® ASSOCIATION OF EDMONTON. ALL RIGHTS RESERVED.Trademarks are owned or controlled by the Canadian Real Estate Association (CREA) and identify real estate professionals who are members of CREA (REALTOR®, REALTORS®) and/or the quality of services they provide (MLS®, Multiple Listing Service®)

Listing information last updated on July 6th, 2025 at 4:32pm MDT