

\$117,500 - 202 10024 Jasper Avenue, Edmonton

MLS® #E4439640

\$117,500

1 Bedroom, 1.00 Bathroom, 684 sqft

Condo / Townhouse on 0.00 Acres

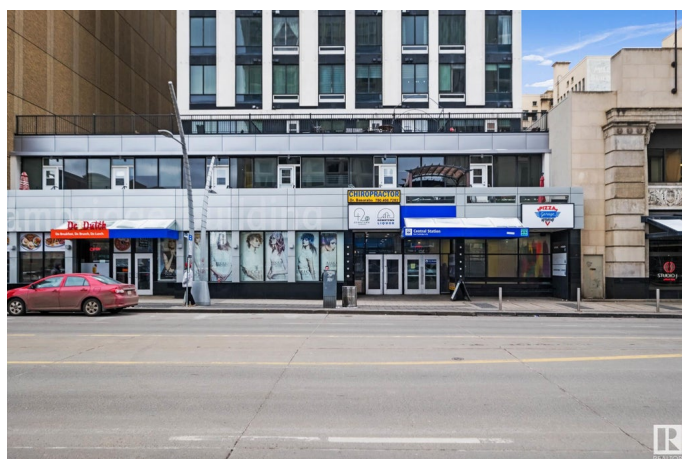
Downtown (Edmonton), Edmonton, AB

Fully rennovated and all appliances are brand new. Prime downtown living awaits in this exceptional location! Discover a spacious unit within Cambridge Lofts on Jasper Avenue. Ideal for those seeking income potential, this unit boasts seamless access to the LRT directly from its premises. With over 680 sq ft of space, enjoy lofty 10 ft ceilings, in-suite laundry, and an open kitchen and living area. Whether you're an astute investor or a first-time buyer craving the vibrant downtown lifestyle, this property presents a fantastic opportunity. Revel in finished concrete flooring complemented by vynal flooring throughout the unit. Unit is rented for one year and the building allows airbnb.

Built in 1968

Essential Information

MLS® #	E4439640
Price	\$117,500
Bedrooms	1
Bathrooms	1.00
Full Baths	1
Square Footage	684
Acres	0.00
Year Built	1968
Type	Condo / Townhouse



Sub-Type	Apartment High Rise
Style	Single Level Apartment
Status	Active

Community Information

Address	202 10024 Jasper Avenue
Area	Edmonton
Subdivision	Downtown (Edmonton)
City	Edmonton
County	ALBERTA
Province	AB
Postal Code	T5J 1R9

Amenities

Amenities	Carbon Monoxide Detectors, Ceiling 10 ft.
Parking	No Parking

Interior

Appliances	Dishwasher-Built-In, Refrigerator, Stacked Washer/Dryer, Stove-Electric
Heating	Baseboard, Hot Water, Electric
# of Stories	18
Stories	1
Has Basement	Yes
Basement	See Remarks

Exterior

Exterior	Concrete
Exterior Features	Commercial, Private Setting, Public Transportation, Schools, Shopping Nearby, View City, View Downtown
Roof	Tar & Gravel
Construction	Concrete
Foundation	Concrete Perimeter

Additional Information

Date Listed	May 30th, 2025
Days on Market	108
Zoning	Zone 12
Condo Fee	\$561

DATA IS DEEMED RELIABLE BUT IS NOT GUARANTEED ACCURATE BY THE REALTORS® ASSOCIATION OF

EDMONTON. COPYRIGHT 2025 BY THE REALTORS® ASSOCIATION OF EDMONTON. ALL RIGHTS RESERVED.Trademarks are owned or controlled by the Canadian Real Estate Association (CREA) and identify real estate professionals who are members of CREA (REALTOR®, REALTORS®) and/or the quality of services they provide (MLS®, Multiple Listing Service®)

Listing information last updated on September 15th, 2025 at 10:02am MDT