

\$299,900 - 14610 85 Avenue, Edmonton

MLS® #E4439332

\$299,900

0 Bedroom, 0.00 Bathroom,
Single Family on 0.00 Acres

Laurier Heights, Edmonton, AB

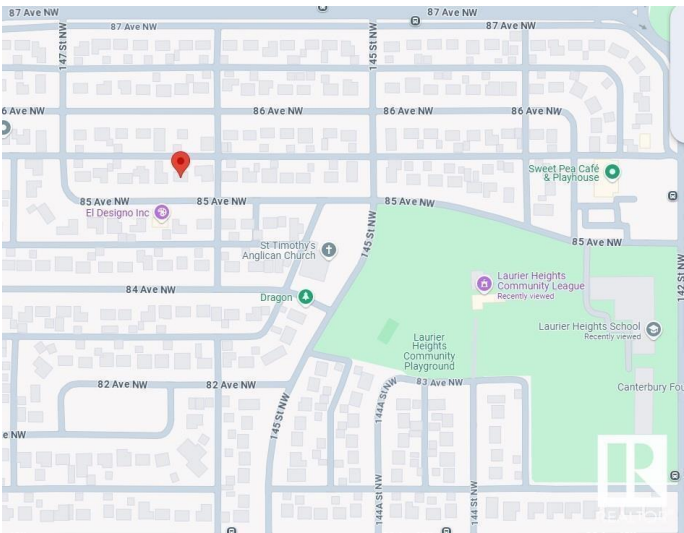
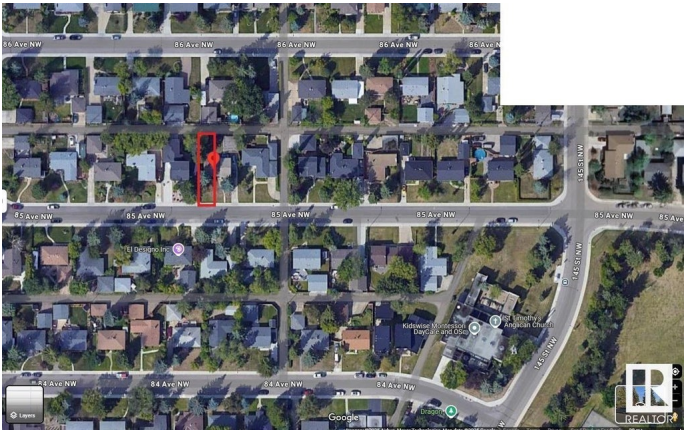
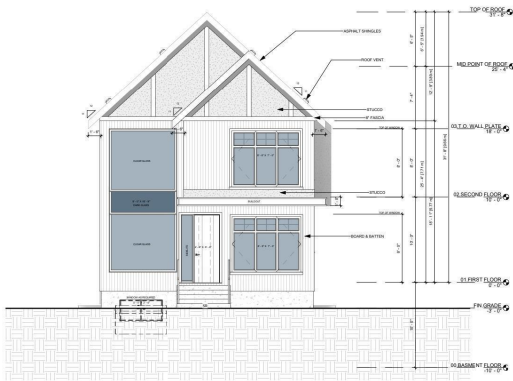
This 25 ft wide by 100 ft long vacant lot offers the perfect opportunity to build your dream home in one of Edmonton's most desirable communities. Prime location with a wealth of amenities nearby, including shopping, golf courses, and the Laurier Heights Community Center & Arena - minutes from downtown. Enjoy the convenience of being within walking distance to Laurier Heights School (Elementary and Junior High), the Edmonton Valley Zoo, parks, and the scenic North Saskatchewan River. Imagine creating a beautiful two-story home with a legal basement suite for extra income and a double detached garage. Donâ€™t miss the chance to secure your future in this vibrant, family-friendly neighborhood!

Essential Information

MLS® #	E4439332
Price	\$299,900
Bathrooms	0.00
Acres	0.00
Type	Single Family
Sub-Type	Vacant Lot/Land
Status	Active

Community Information

Address 14610 85 Avenue



Area	Edmonton
Subdivision	Laurier Heights
City	Edmonton
County	ALBERTA
Province	AB
Postal Code	T5R 3Z4

Exterior

Exterior Features Back Lane, Golf Nearby, Level Land, Partially Landscaped, Playground Nearby, Public Transportation, Schools, Shopping Nearby

Additional Information

Date Listed	May 29th, 2025
Days on Market	89
Zoning	Zone 10

DATA IS DEEMED RELIABLE BUT IS NOT GUARANTEED ACCURATE BY THE REALTORS® ASSOCIATION OF EDMONTON. COPYRIGHT 2025 BY THE REALTORS® ASSOCIATION OF EDMONTON. ALL RIGHTS RESERVED.Trademarks are owned or controlled by the Canadian Real Estate Association (CREA) and identify real estate professionals who are members of CREA (REALTOR®, REALTORS®) and/or the quality of services they provide (MLS®, Multiple Listing Service®)

Listing information last updated on August 26th, 2025 at 3:32am MDT