

\$249,900 - 35 3010 33 Avenue, Edmonton

MLS® #E4435084

\$249,900

2 Bedroom, 2.50 Bathroom, 624 sqft

Condo / Townhouse on 0.00 Acres

Silver Berry, Edmonton, AB

Welcome to your new home! Located just off of the Millcreek Ravine with close access to the ravine trails, bus routes, the Henday and Whitemud. This bright, spacious bi-level 2 bedroom, 2.5 bathroom condo with single car garage is perfect for everyone. Approximately 1400sqft of living space. Bedrooms are downstairs and cool all summer. Well maintained. Forced air heating with gas fireplace. Hot water tank replaced in 2021. Dishwasher, Stove, over range Microwave and washer/drier recently replaced. Single car garage has 10x10 storage deck above. Patio has Natural Gas BBQ hookup. TELUS Fiberoptic Internet ready for hookup. Freshly painted and available for immediate possession

Built in 2006

Essential Information

MLS® #	E4435084
Price	\$249,900
Bedrooms	2
Bathrooms	2.50
Full Baths	2
Half Baths	1
Square Footage	624
Acres	0.00



Year Built	2006
Type	Condo / Townhouse
Sub-Type	Townhouse
Style	2 Storey
Status	Active

Community Information

Address	35 3010 33 Avenue
Area	Edmonton
Subdivision	Silver Berry
City	Edmonton
County	ALBERTA
Province	AB
Postal Code	T6T 0C3

Amenities

Amenities	Ceiling 9 ft., Closet Organizer No Smoking Home, Park Storage-In-Suite
-----------	--

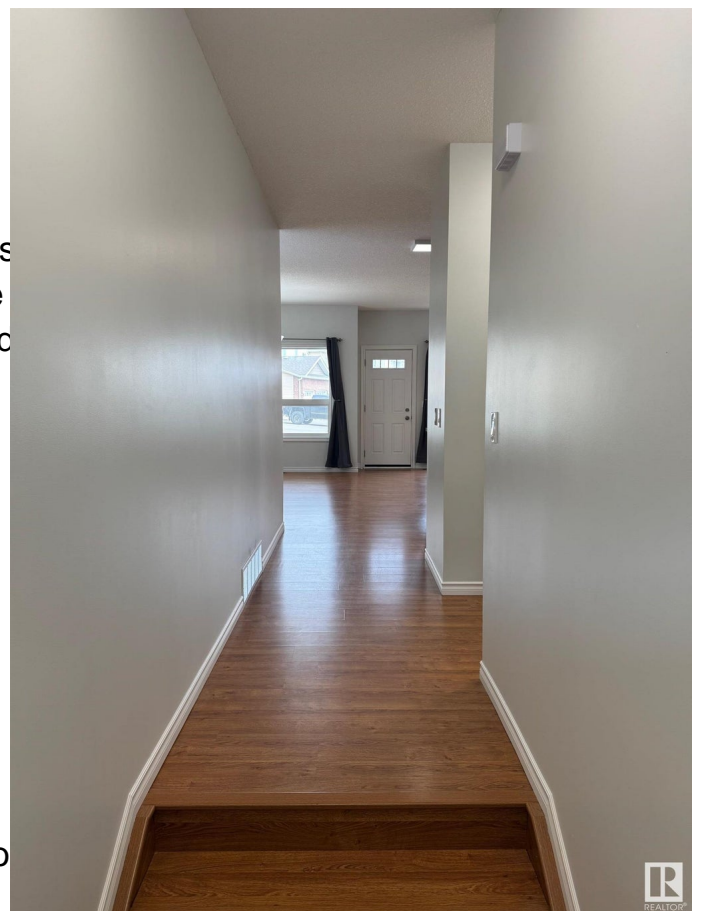
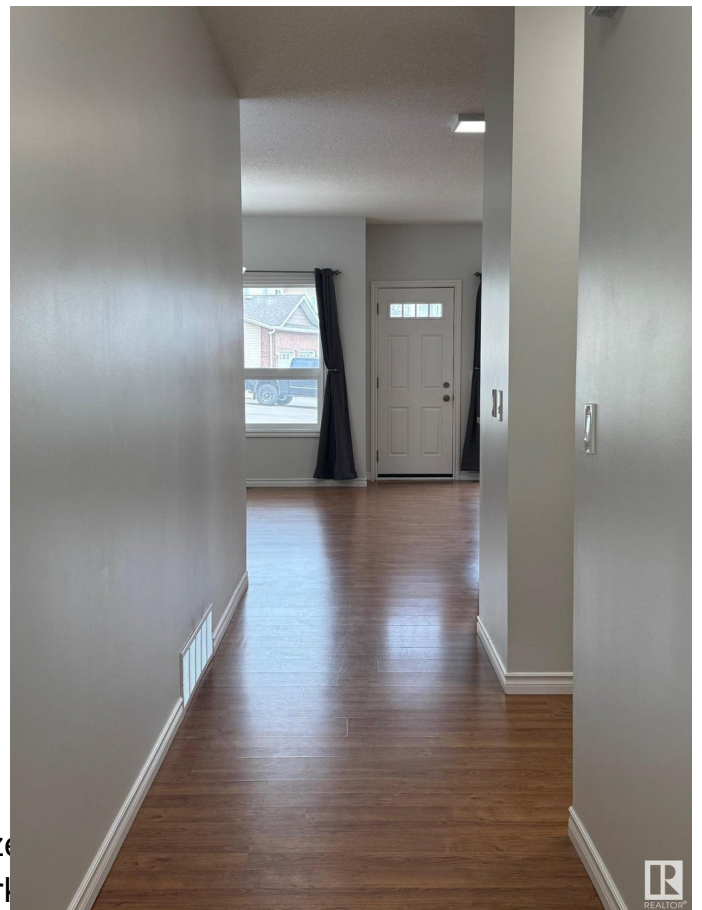
Parking	Parking Pad Cement/Paved,
---------	---------------------------

Interior

Interior Features	ensuite bathroom
Appliances	Alarm/Security System, Dis Garage Opener, Microwave Stove-Electric, Washer, Wind
Heating	Forced Air-1, Natural Gas
Fireplace	Yes
Fireplaces	Direct Vent
Stories	2
Has Basement	Yes
Basement	Full, Finished

Exterior

Exterior	Wood, Brick
Exterior Features	Public Transportation, School
Roof	Asphalt Shingles
Construction	Wood, Brick
Foundation	Concrete Perimeter



Additional Information

Date Listed	May 8th, 2025
Days on Market	40
Zoning	Zone 30
Condo Fee	\$310

DATA IS DEEMED RELIABLE BUT IS NOT GUARANTEED ACCURATE BY THE REALTORS® ASSOCIATION OF EDMONTON. COPYRIGHT 2025 BY THE REALTORS® ASSOCIATION OF EDMONTON. ALL RIGHTS RESERVED.Trademarks are owned or controlled by the Canadian Real Estate Association (CREA) and identify real estate professionals who are members of CREA (REALTOR®, REALTORS®) and/or the quality of services they provide (MLS®, Multiple Listing Service®)

Listing information last updated on June 17th, 2025 at 1:17am MDT