

\$180,000 - 307 2588 Anderson Way, Edmonton

MLS® #E4432433

\$180,000

1 Bedroom, 1.00 Bathroom, 582 sqft

Condo / Townhouse on 0.00 Acres

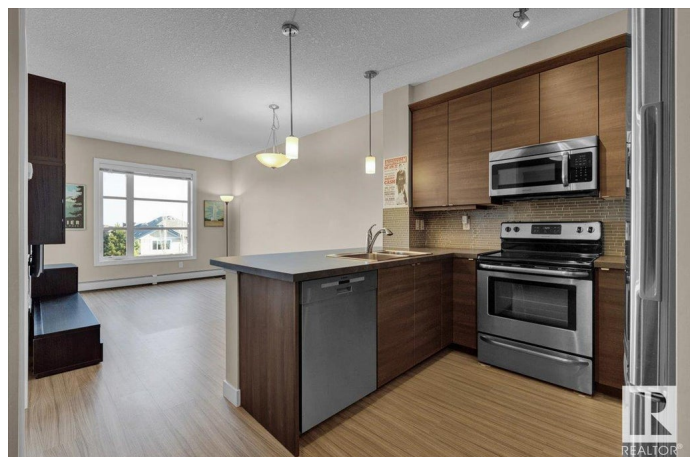
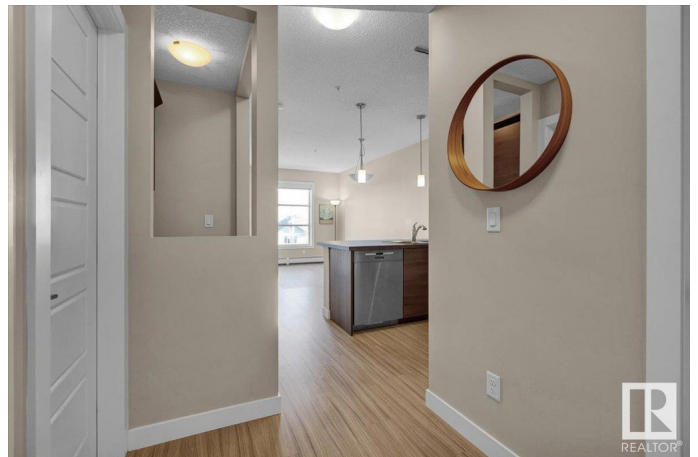
Ambleside, Edmonton, AB

Located just minutes from school, Currents of Windermere shopping, dining, and entertainment. Modern building offers a state of the art gym, party/media room, guest suite and picnic barbecue area. This beautiful one bedroom unit features laminate flooring throughout the open concept dining and living area, a u-shaped kitchen complete with an eating bar and stainless steel appliances, in suite laundry/storage room, a tech center perfect for a home office area, a 4 pce bathroom, a spacious owner's suite with a walk-in closet. Comes with a convenient surface titled parking stall. Wall unit included. For more details please visit the REALTOR®'s Website.

Built in 2011

Essential Information

MLS® #	E4432433
Price	\$180,000
Bedrooms	1
Bathrooms	1.00
Full Baths	1
Square Footage	582
Acres	0.00
Year Built	2011
Type	Condo / Townhouse



Sub-Type	Lowrise Apartment
Style	Single Level Apartment
Status	Active

Community Information

Address	307 2588 Anderson Way
Area	Edmonton
Subdivision	Ambleside
City	Edmonton
County	ALBERTA
Province	AB
Postal Code	T6W 0R2

Amenities

Amenities	Exercise Room, Guest Suite, Social Rooms, See Remarks
Parking Spaces	1
Parking	Stall

Interior

Appliances	Dishwasher-Built-In, Dryer, Refrigerator, Stove-Electric, Washer, See Remarks
Heating	Forced Air-1, Natural Gas
# of Stories	4
Stories	1
Has Basement	Yes
Basement	None, No Basement

Exterior

Exterior	Wood, Composition
Exterior Features	Picnic Area, Public Transportation, Shopping Nearby
Roof	Tar & Gravel
Construction	Wood, Composition
Foundation	Concrete Perimeter

School Information

Elementary	Dr.Margaret-Ann/St. John
Middle	Dr.Margaret-Ann/St. John
High	Lillian Osborne/Mother Mar

Additional Information

Date Listed	April 24th, 2025
Days on Market	6
Zoning	Zone 56
HOA Fees	105
HOA Fees Freq.	Annually
Condo Fee	\$385

DATA IS DEEMED RELIABLE BUT IS NOT GUARANTEED ACCURATE BY THE REALTORS® ASSOCIATION OF EDMONTON. COPYRIGHT 2025 BY THE REALTORS® ASSOCIATION OF EDMONTON. ALL RIGHTS RESERVED. Trademarks are owned or controlled by the Canadian Real Estate Association (CREA) and identify real estate professionals who are members of CREA (REALTOR®, REALTORS®) and/or the quality of services they provide (MLS®, Multiple Listing Service®)

Listing information last updated on April 30th, 2025 at 11:17am MDT