

# \$314,999 - 430 5151 Windermere Boulevard, Edmonton

MLS® #E4424901

**\$314,999**

2 Bedroom, 2.00 Bathroom, 789 sqft

Condo / Townhouse on 0.00 Acres

Ambleside, Edmonton, AB

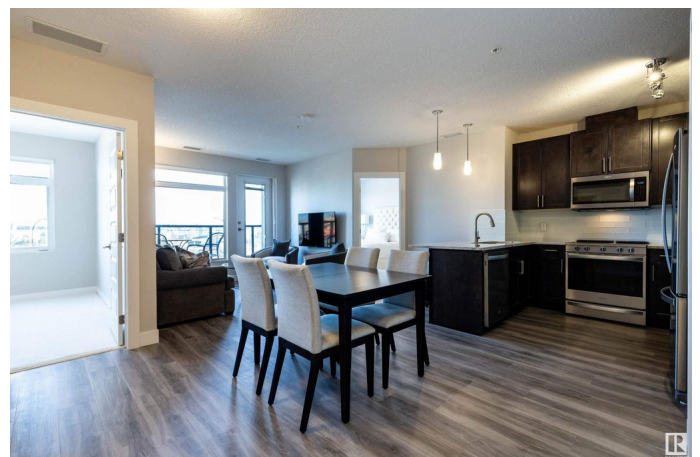
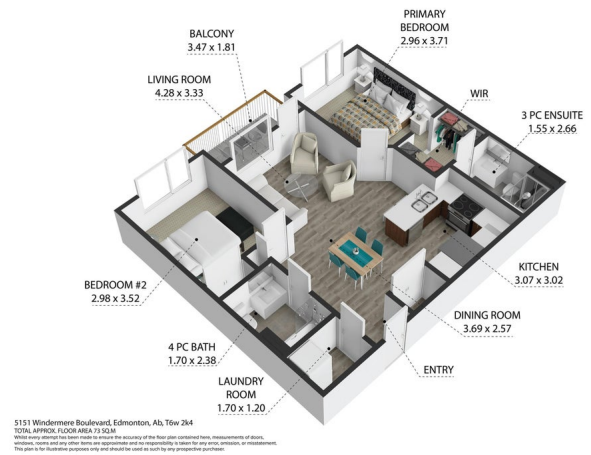
Welcome to this stunning NEWLY renovated property in the highly desired SIGNATURE building at Ambleside. Upon entering this 2 bedroom, 2 full bath home, you will immediately notice PRIDE OF OWNERSHIP and the abundance of NATURAL LIGHT. The luxurious kitchen is complete with UPGRADED stainless steel appliances and GRANITE countertops. A spacious dining and living room area offers the PERFECT floorpan, making gathering and entertaining a breeze. The first of the 2 bedrooms welcomes you, complete with WALK THROUGH closet and wonderful ENSUITE. The second bedroom, 4 piece bath and private LAUNDRY room completes the remainder of the LUXURIOUS interior. A generously appointed balcony offers exceptional VIEWS of nearby amenities and downtown Edmonton. HEATED ABOVE GROUND parking, on-site fitness room, meeting room, concierge service, ample visitor parking and DIRECT access to nearby amenities including restaurants, shopping, schools, transit and Henday - this home has it all!

Built in 2014

## Essential Information

MLS® # E4424901

Price \$314,999



|                |                        |
|----------------|------------------------|
| Bedrooms       | 2                      |
| Bathrooms      | 2.00                   |
| Full Baths     | 2                      |
| Square Footage | 789                    |
| Acres          | 0.00                   |
| Year Built     | 2014                   |
| Type           | Condo / Townhouse      |
| Sub-Type       | Apartment High Rise    |
| Style          | Single Level Apartment |
| Status         | Active                 |

### **Community Information**

|             |                               |
|-------------|-------------------------------|
| Address     | 430 5151 Windermere Boulevard |
| Area        | Edmonton                      |
| Subdivision | Ambleside                     |
| City        | Edmonton                      |
| County      | ALBERTA                       |
| Province    | AB                            |
| Postal Code | T6W 2K4                       |

### **Amenities**

|           |   |
|-----------|---|
| Amenities | Air Conditioner, Exercise Room, No Animal Home, No Smoking Home, Parking-Extra, Parking-Visitor, Party Room, Recreation Room/Centre, Secured Parking, Security Door, Social Rooms |
| Parking   | Heated  |

### **Interior**

|                   |  |
|-------------------|--|
| Interior Features | ensuite bathroom   |
| Appliances        | Dishwasher-Built-In, Dryer, Refrigerator, Stove-Electric, Washer, Window Coverings |
| Heating           | Heat Pump, Natural Gas   |
| # of Stories      | 12   |
| Stories           | 1  |
| Has Basement      | Yes  |
| Basement          | None, No Basement  |

### **Exterior**

|                   |  |
|-------------------|--|
| Exterior          | Concrete, Stucco   |
| Exterior Features | Golf Nearby, Landscaped, Level Land, Playground Nearby, Public |

|              |   |
|--------------|---|
|              | Transportation, Schools, Shopping Nearby, View Downtown |
| Roof         | EPDM Membrane   |
| Construction | Concrete, Stucco  |
| Foundation   | Concrete Perimeter                                      |

### **Additional Information**

|                |                  |
|----------------|------------------|
| Date Listed    | March 10th, 2025 |
| Days on Market | 52               |
| Zoning         | Zone 56          |
| Condo Fee      | \$443            |

DATA IS DEEMED RELIABLE BUT IS NOT GUARANTEED ACCURATE BY THE REALTORS® ASSOCIATION OF EDMONTON. COPYRIGHT 2025 BY THE REALTORS® ASSOCIATION OF EDMONTON. ALL RIGHTS RESERVED. Trademarks are owned or controlled by the Canadian Real Estate Association (CREA) and identify real estate professionals who are members of CREA (REALTOR®, REALTORS®) and/or the quality of services they provide (MLS®, Multiple Listing Service®)

Listing information last updated on May 1st, 2025 at 7:32pm MDT